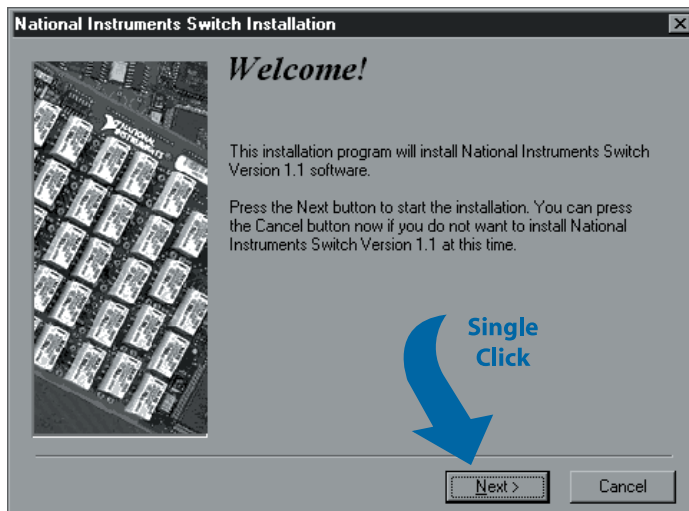
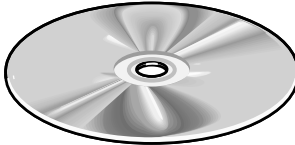


Set up and Test Your NI 2590/2591

1 Install Your Software

Insert
CD



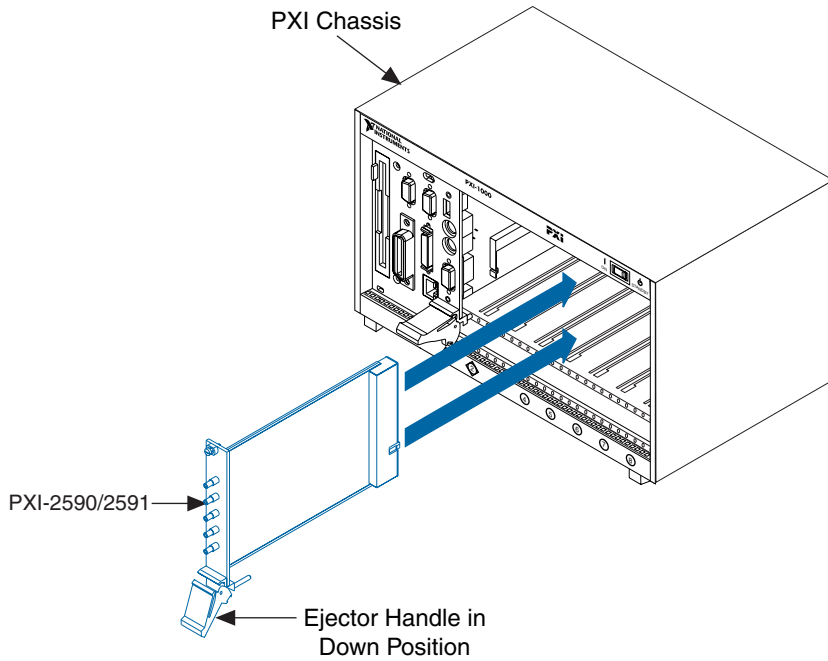
2

Install Your NI 2590/2591



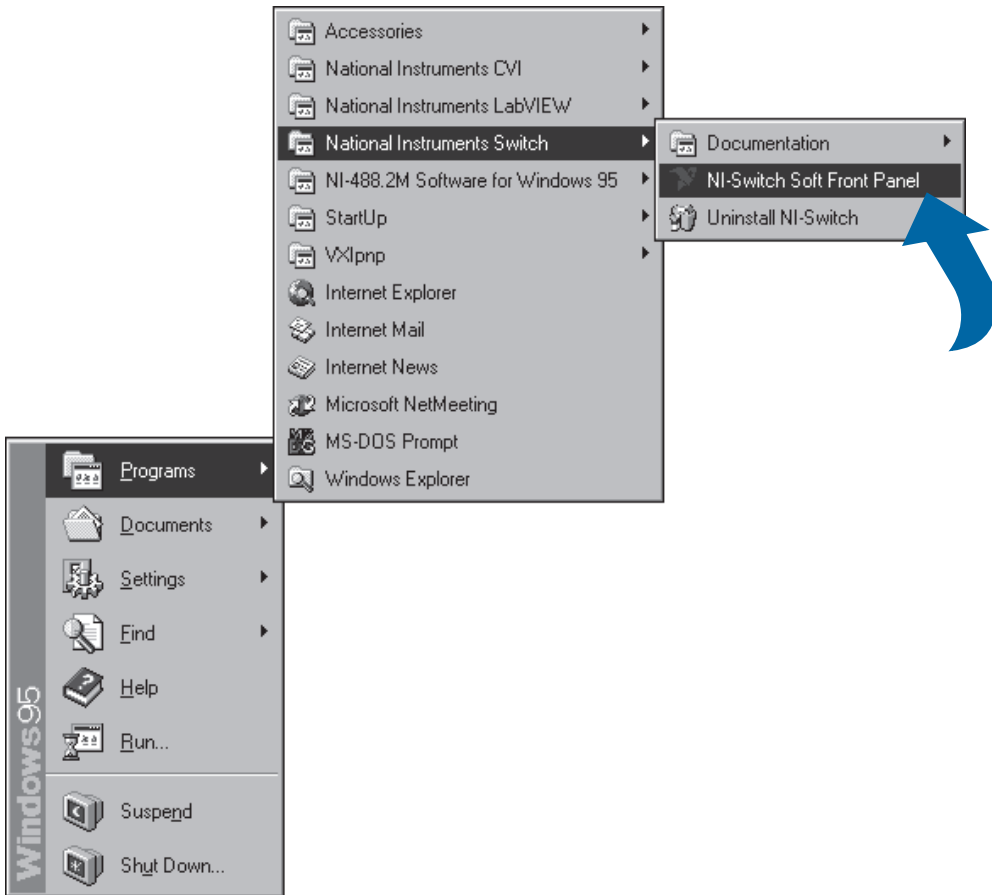
Caution

Turn the power off before installing your hardware.



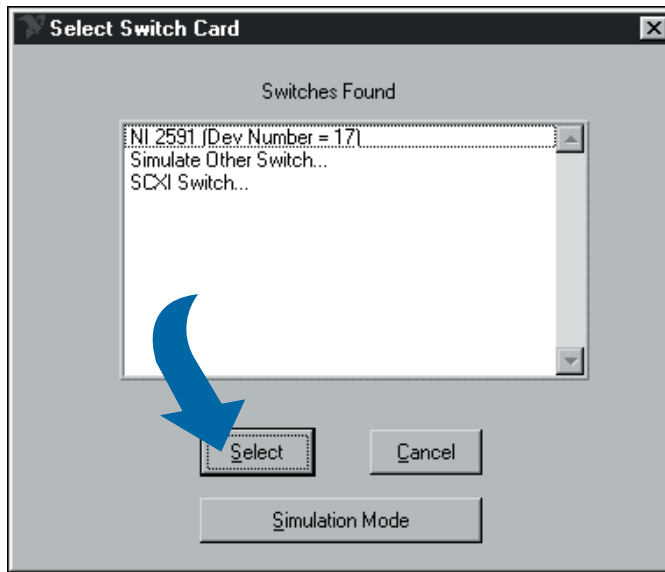
3

Run the Soft Front Panel



4

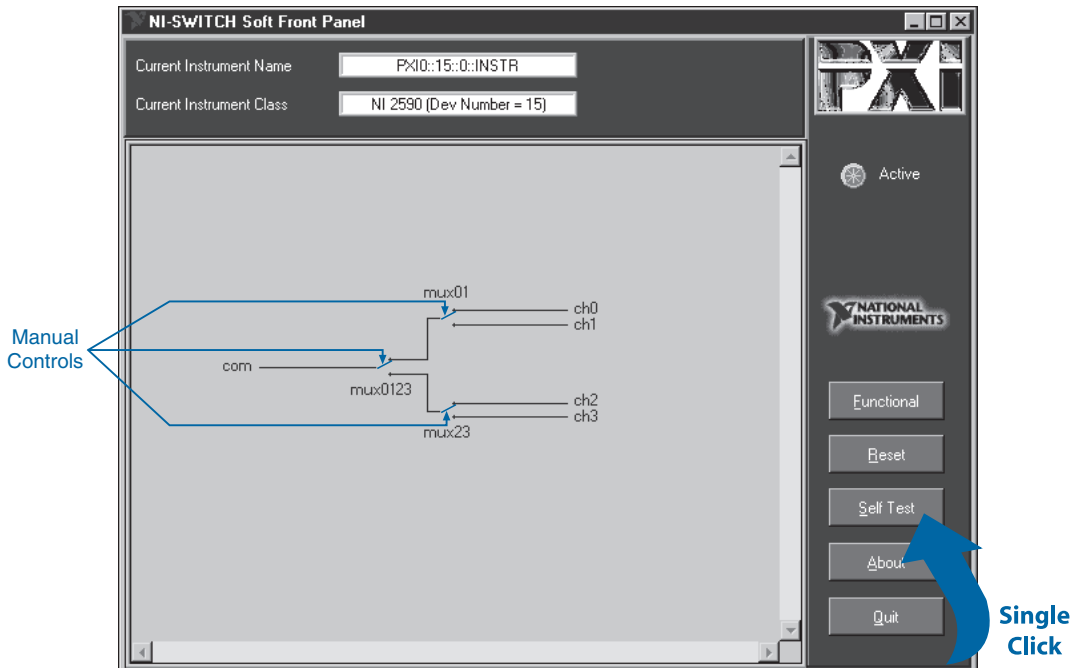
Select Your Device



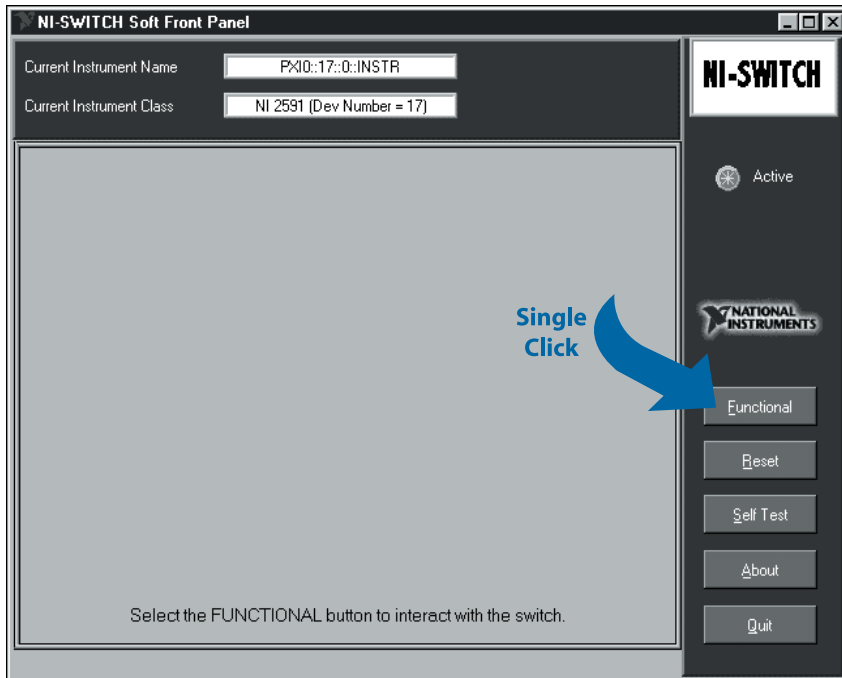
5

Verify That Your NI 2590/2591 Is Working

- ◆ NI 2590—Run the self-test.
 1. Run the self-test by clicking the **Self Test** button on the soft front panel.
 2. After running the self-test, you can check the relays by clicking the manual switch controls on the soft front panel. You will hear a click as the relay switches, and the control will indicate the position of the relay. To verify the switch position, use a continuity tester on the front panel connectors.

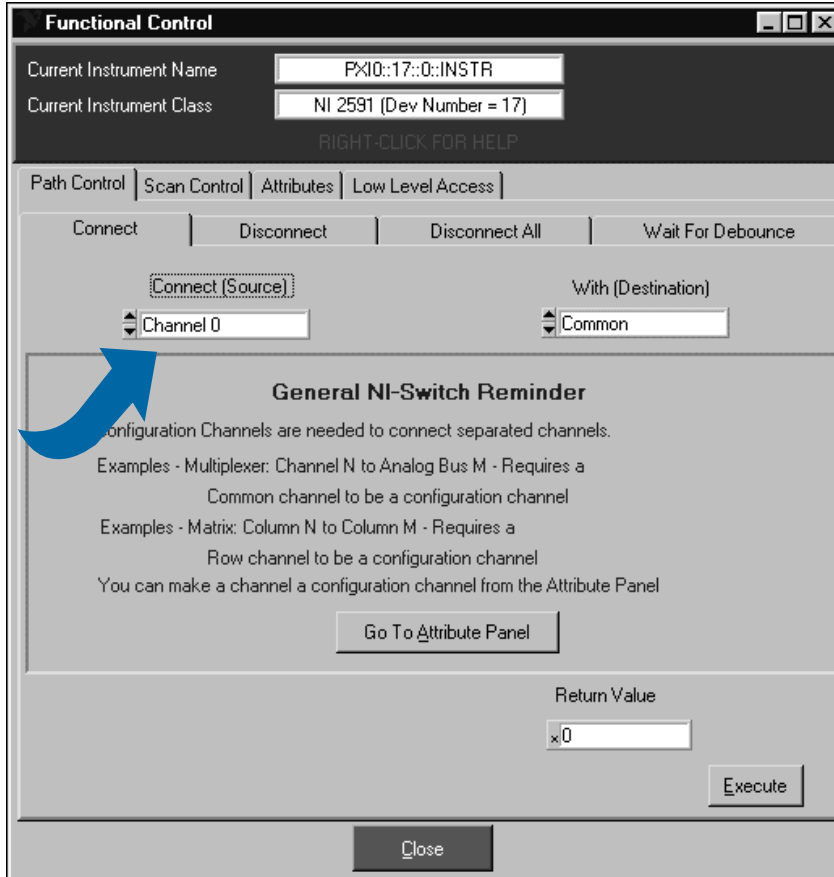


- ◆ NI 2591—Run the functional test to verify that the channels and relays are working correctly by clicking the **Functional** button.



After you click the **Functional** button, do the following:

1. In the **Connect** tab, select the source you want to connect, and click **Execute**.
2. On the **Disconnect all** tab, click **Execute**. This will clear the current channel settings.
3. Go back to the **Connect** tab, choose another channel to test, and click **Execute**.



CVI™, LabVIEW™, NI-488.2M™, National Instruments™, PXI™, and SCXI™ are trademarks of National Instruments Corporation. Product and company names mentioned herein are trademarks or trade names of their respective companies.

© Copyright 1999, 2000 National Instruments Corporation. All rights reserved.



322446B-01

Dec00